



WE CONVEY THE WORLD

CONVEYING SYSTEMS  
ENGINEERING  
STORAGE



## INDEX

### COMPANY PROFILE

1	SINGLE CHAIN CONVEYORS – TK RANGE .....	<i>pag. 8</i>
2	DOUBLE CHAIN CONVEYORS – TKK RANGE .....	<i>pag. 10</i>
3	SCREW CONVEYORS .....	<i>pag. 12</i>
4	VERTICAL SCREWS .....	<i>pag. 14</i>
5	SCREW BUNKERS .....	<i>pag. 15</i>
6	BELT CONVEYORS – TN RANGE .....	<i>pag. 16</i>
7	BELT CONVEYORS – TN-VR RANGE .....	<i>pag. 18</i>
8	TUBULATOR BELT CONVEYORS – TB RANGE .....	<i>pag. 20</i>
9	BELT CONVEYORS – COBRA RANGE .....	<i>pag. 22</i>
10	TRIPPER BELT CONVEYORS .....	<i>pag. 24</i>
11	BUCKET ELEVATOR – GB RANGE .....	<i>pag. 26</i>
12	MOVING FLOORS STORAGE AND EXTRACTION SYSTEMS .....	<i>pag. 28</i>
13	TRAVELLING SCREW STORAGE AND EXTRACTION SYSTEMS .....	<i>pag. 30</i>
14	STEEL PLATE CONVEYORS – CRT – PST RANGE .....	<i>pag. 31</i>
15	STEEL PLATE CONVEYORS – CS RANGE .....	<i>pag. 32</i>
16	DIVERTERS – CLP RANGE .....	<i>pag. 33</i>
17	MOTORIZED AND PNEUMATIC SLIDE – SRD RANGE .....	<i>pag. 33</i>
18	DISK SEPARATORS – SD, SD-PDN-SDL RANGE .....	<i>pag. 34</i>
19	ROLLER SEPARATORS – SR-TN RANGE .....	<i>pag. 36</i>





Trasmec Company s.r.l. was born in 1954, specializing in industrial conveying systems and loose materials storage plants construction and installation.

Since the early seventies Trasmec has been operating in different fields such as chemical, food, feedstuff and seeds industry. Afterwards, with appearing of the first particleboard plants in Italy, Trasmec starts its experience in wood working sector.

Working in this sector, being specialized in machinery construction for handling of loose materials to the various production lines of the plants manufacturing particleboard, MDF-board and OSB-board, accounts today for 90% of Trasmec's turnover.

The remaining 10% represents proceeds of production and sales of conveying and storage systems for chemical industry, power stations producing energy by biomasses combustion, waste handling, etc.

With more than 10.000 conveyors supplied to the production plants all over the world during the last 10 years, Trasmec can be proud of the unique experience in conveying systems manufacturing, providing its Clients with maximum reliability and technology.



WE CONVEY THE WORLD

CONVEYING SYSTEMS  
ENGINEERING  
STORAGE





**TRASMECC**   
ITALY

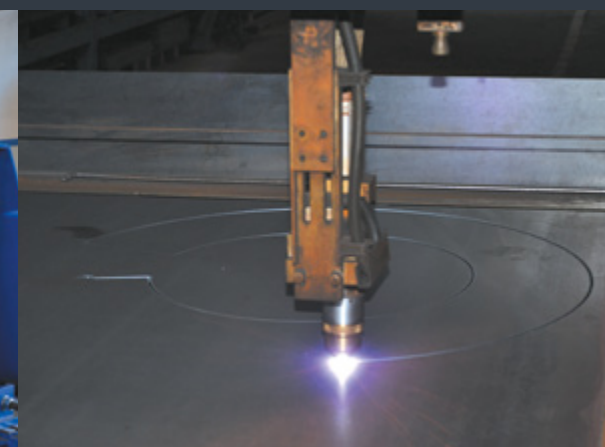
Via Soncinese, 2/A - 26011 Casalbuttano (Cremona) Italy  
Tel. +39 0374 364011 - Telefax: +39 0374 364077  
<http://www.trasmecc.com>  
e-mail technical department: [ufficiotecnico@trasmecc.com](mailto:ufficiotecnico@trasmecc.com)  
e-mail commercial department: [direzione@trasmecc.com](mailto:direzione@trasmecc.com)



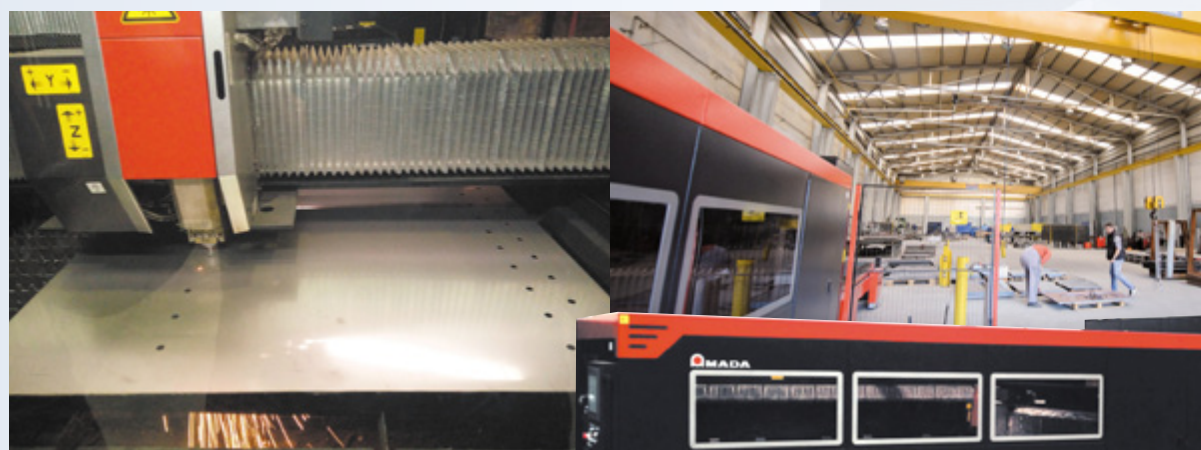


To reach us you can use following airports:  
 Milano Linate (60 minutes drive)  
 Milano Malpensa (120 minutes drive)  
 Verona Catullo (80 minutes drive)  
 Bergamo Orio al Serio (60 minutes drive)

Or the motorway A21 exit Pontevico



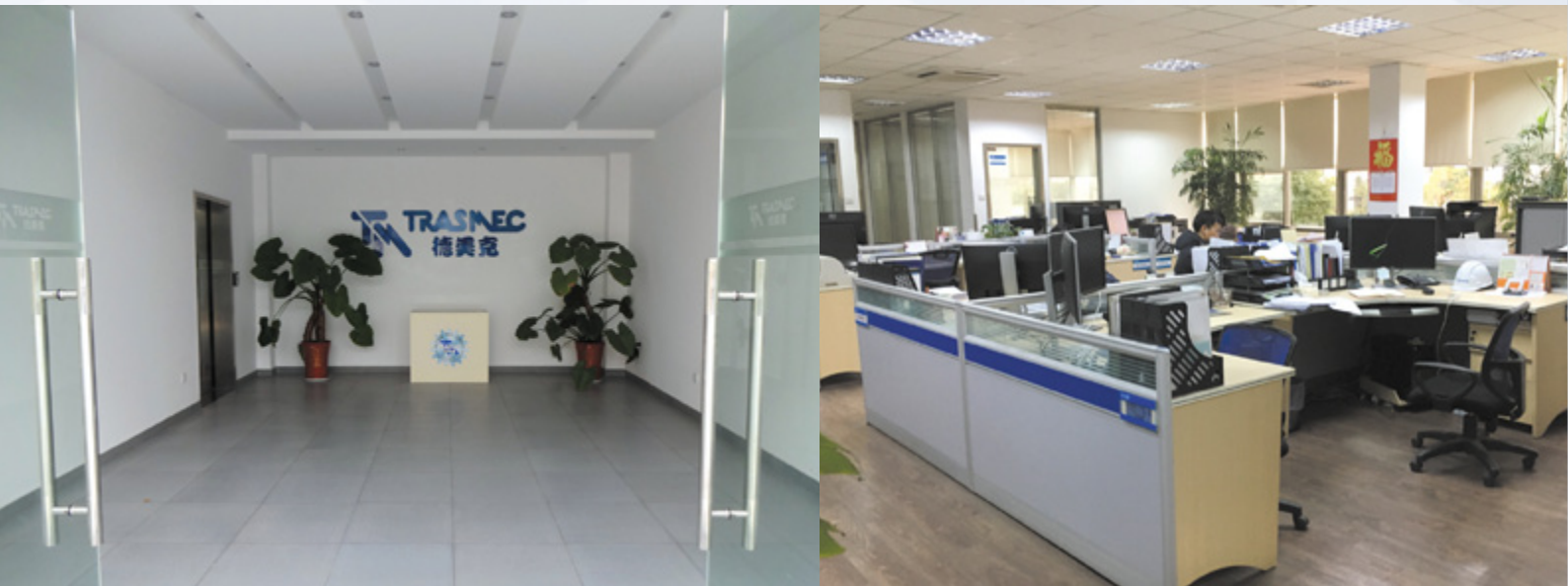




Production unit in  
Cluj-Napoca (Romania)







Production unit in Kunshan, Suzhou (China)





## 1 SINGLE CHAIN CONVEYORS TK RANGE

### MAIN FEATURES

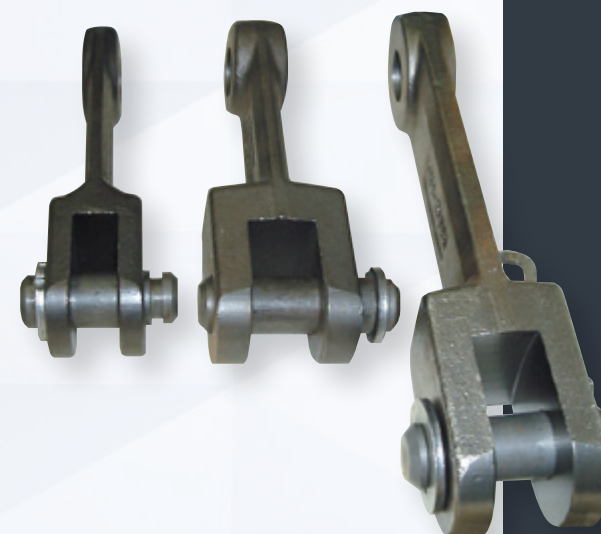
- Capacities up to **350 cm/h**
- Manganese guide high wear resistant
- Chain in **MnCrB5** pitch 142 mm, high stress resistant with pins in stainless steel
- Available troughs in **stainless steel (AISI304)** for corrosive conveying materials
- Available bottom with **Hardox 450** for very wearing conveying materials
- Available with troughs and scrapers covered in **high density polyethylene** for glued conveying materials
- Available with **scrapers "rake" type** for conveying easily long strands (example OSB strands)
- Equipped with clogging sensor
- Equipped with **SEW** gear motors, **KH** series, directly coupled on the shaft with conical socket for easy maintenance
- Each gear motor is equipped with **torque arm** and its sensor, in order to prevent chain breaking to to clogging
- Availability to project conforming **ATEX** norm



## PANZER CHAIN CONVEYORS PNZ RANGE

### MAIN FEATURES

- Equipped with chain "panzer" typology, in **MnCrB5** with pitch **260 mm** very high stress resistant, with pins in stainless steel
- Suggested for high capacities (**up to 600 cm/h**), big lengths, heterogeneous conveying materials (stones, metals, etc.)
- Equipped with **"Hercules" tensioning system**, for easy chain tightening











## 2 DOUBLE CHAIN CONVEYORS TKK RANGE

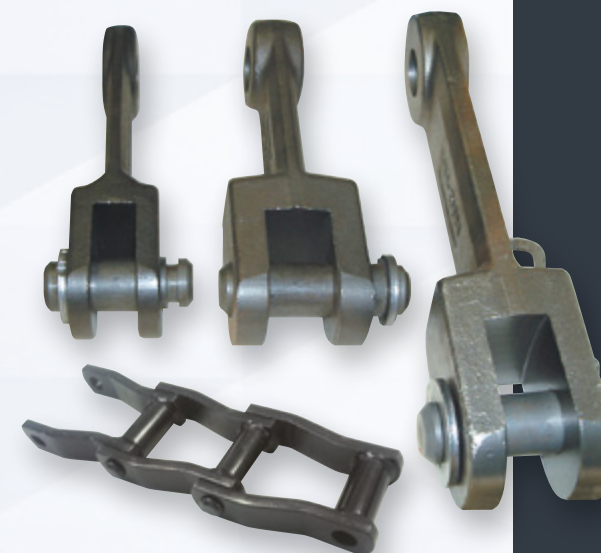
### MAIN FEATURES

- Capacities up to **1000 cm/h**
- Manganese guide high wear resistant
- Chain in **MnCrB5** high stress resistant with pins in stainless steel
- Available troughs manufacture in **stainless steel (AISI304)** for corrosive conveying materials
- Available covered bottom with **Hardox 450** for very wearing conveying materials
- Available with bottom and scrapers in **high density polyethylene** for glued conveying materials
- Available with **scrapers "rake" type** for conveying easily long strands (example OSB strands)
- Equipped with clogging sensor
- Equipped with **SEW** gear motors, **KH** series, directly coupled on the shaft with conical socket for easy maintenance
- Each gear motor is equipped with **torque arm** and its sensor, in order to prevent chain breaking to to clogging
- Availability to project conforming **ATEX** norm

## PANZER CHAIN CONVEYORS PNZ RANGE

### MAIN FEATURES

- Equipped with chain "panzer" typology, in **MnCrB5** with **pitch 260 mm** very high stress resistant, with pins in stainless steel
- Suggested for high capacities (**up to 1800 cm/h**), big lengths, heterogeneous conveying materials (stones, metals, etc.)
- Equipped with **"Hercules" tensioning system** for easy chain tightening











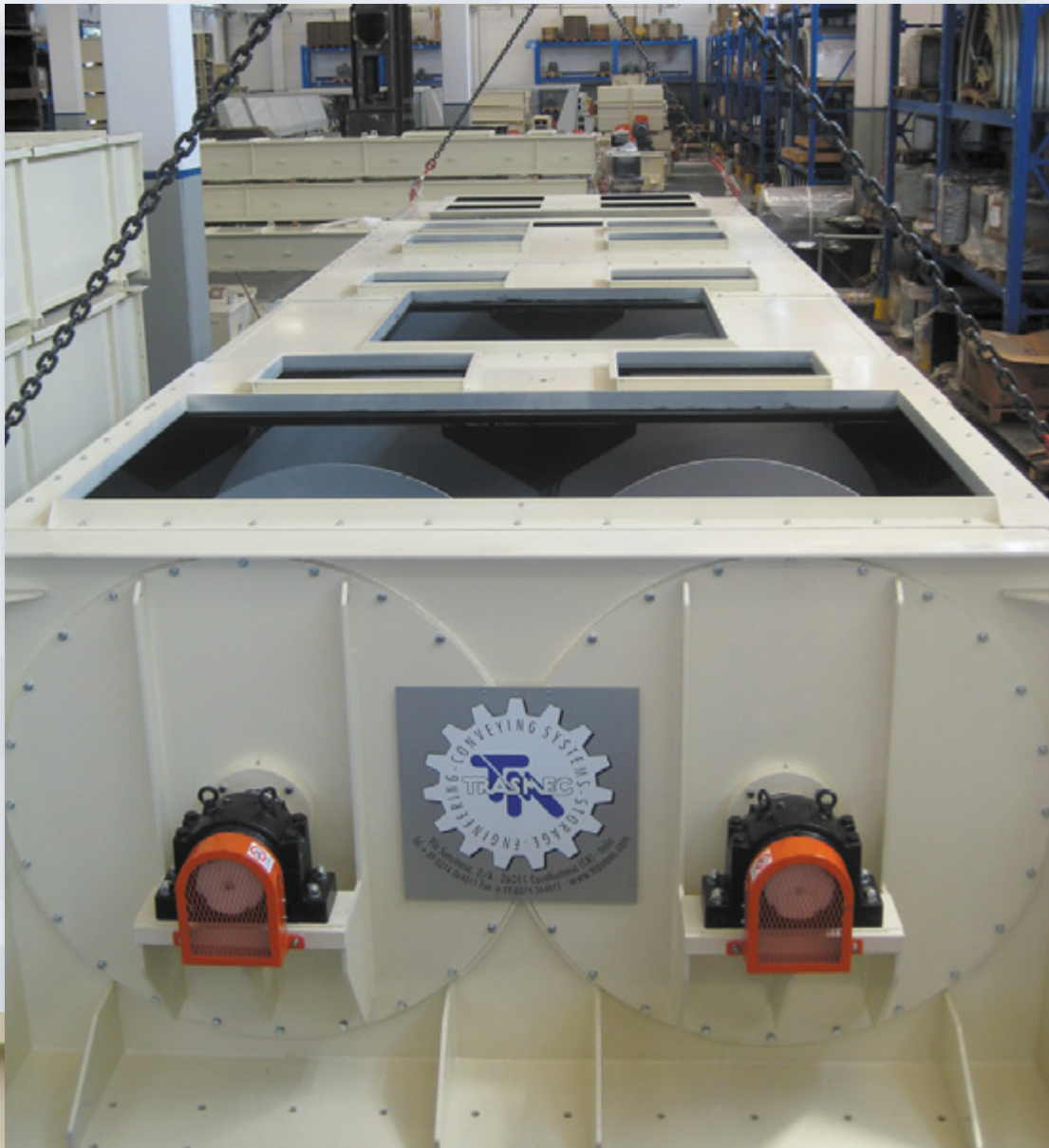
## 3 SCREW CONVEYORS

### MAIN FEATURES

- Available with diameters (D) from **200 mm up to 1600 mm**
- Available with trough and/or spirals in **Hardox 450** for very wearing conveying materials
- Available with **"flaring" trough**, to adapt to different infeed point
- Availability to project conforming to **ATEX** norm
- Adaptable for many scope











## 4 VERTICAL SCREWS

### MAIN FEATURES

- Capacities up to 600 cm/h with
- Heights (H) up to 12.000 mm
- Diameters (D) up to 1.200 mm
- Supplied with its screw injector
- Availability to project conforming to ATEX norm







## 5 SCREW BUNKERS

### MAIN FEATURES

- Available for every capacity, with single or multiple screw
- For very wearing material, it is also available with **HARDOX** or **CERAMIC** coating for trough and spirals
- Available confirming **ATEX 21**







## 6 BELT CONVEYORS TN RANGE

### MAIN FEATURES

- Capacities up to **1000 cm/h**
- Width (W) from **400** to **1.600 mm**
- Available with **galvanized covers** or steel sheets as lateral protections
- Available with **close bottom in steel sheets** to prevent material scattering on the return direction
- Available with **self-cleaning bottom** with sheets in **high density propylene**
- Equipped with roller for **self-alignment** of the belt for
- Equipped with **weight tensioning** system for length  $L > 50$  m
- Equipped with **SEW** gear motors, **KH** series, directly coupled on the shaft with conical socket for easy maintenance

*Belt is available with following characteristics:*

- **Hot vulcanized rubber belt with high stress resistance up to class CL630**
- Very **low temperatures resistant** ( $T < -40$  °C)
- Equipped with **profiles** for inclination  $\alpha > 20^\circ$
- **Self-Cleaning systems** as motorized brush, scraper, air system
- **Rubber walls** in correspondence of infeed points (or for the whole length, if requested) to prevent any scattering of material or dust











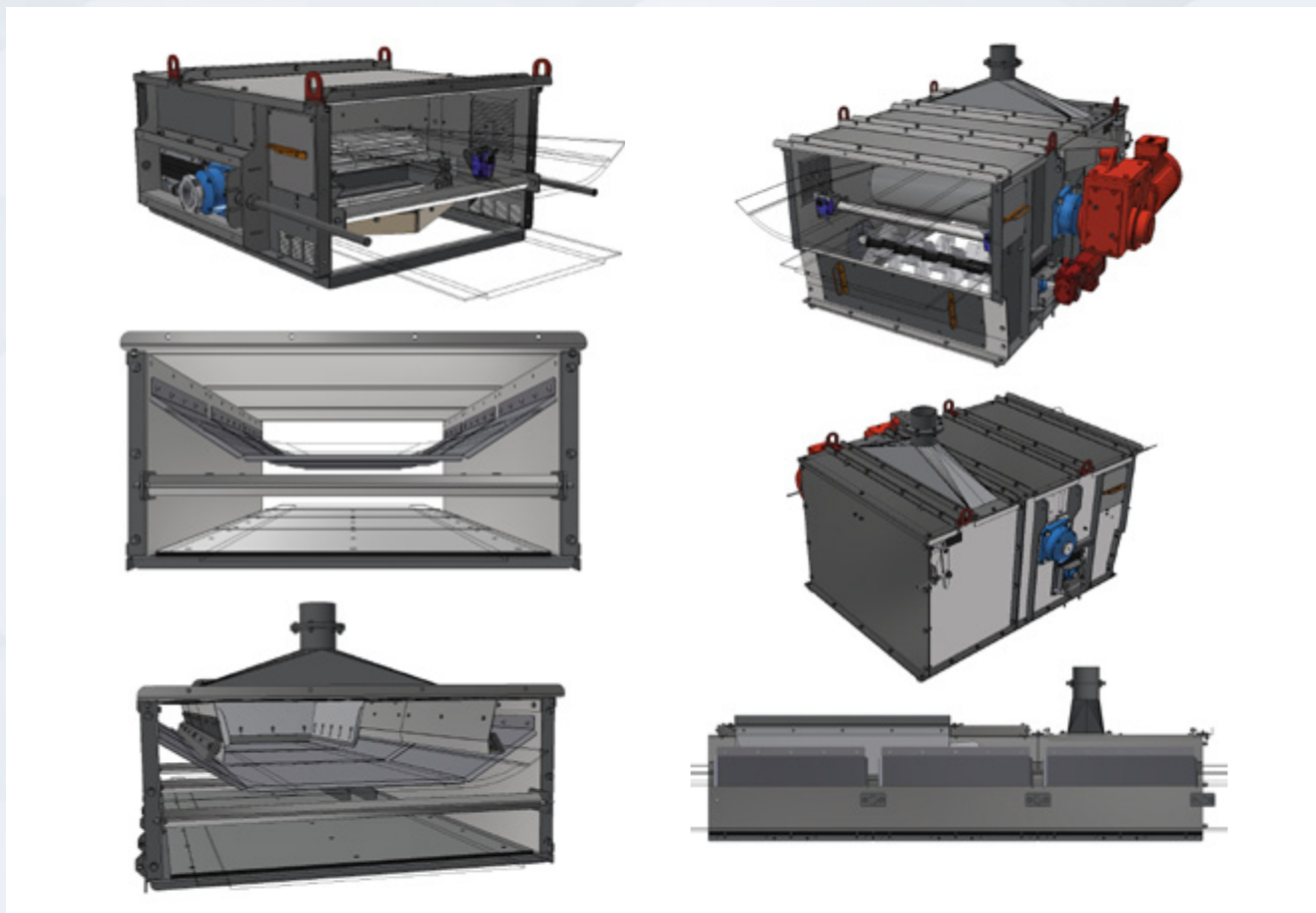
## 7 BELT CONVEYORS TN-VR RANGE

### MAIN FEATURES

- Suitable for conveying **glued flake**
- **Complete closed system** in order to avoid dust scattering
- Closed bottom covered with **antistatic material** for recovering dust through **"recovering" screw** conveyors, which are equipped with aspiration system











## 8 TUBULATOR BELT CONVEYORS TB RANGE

### MAIN FEATURES

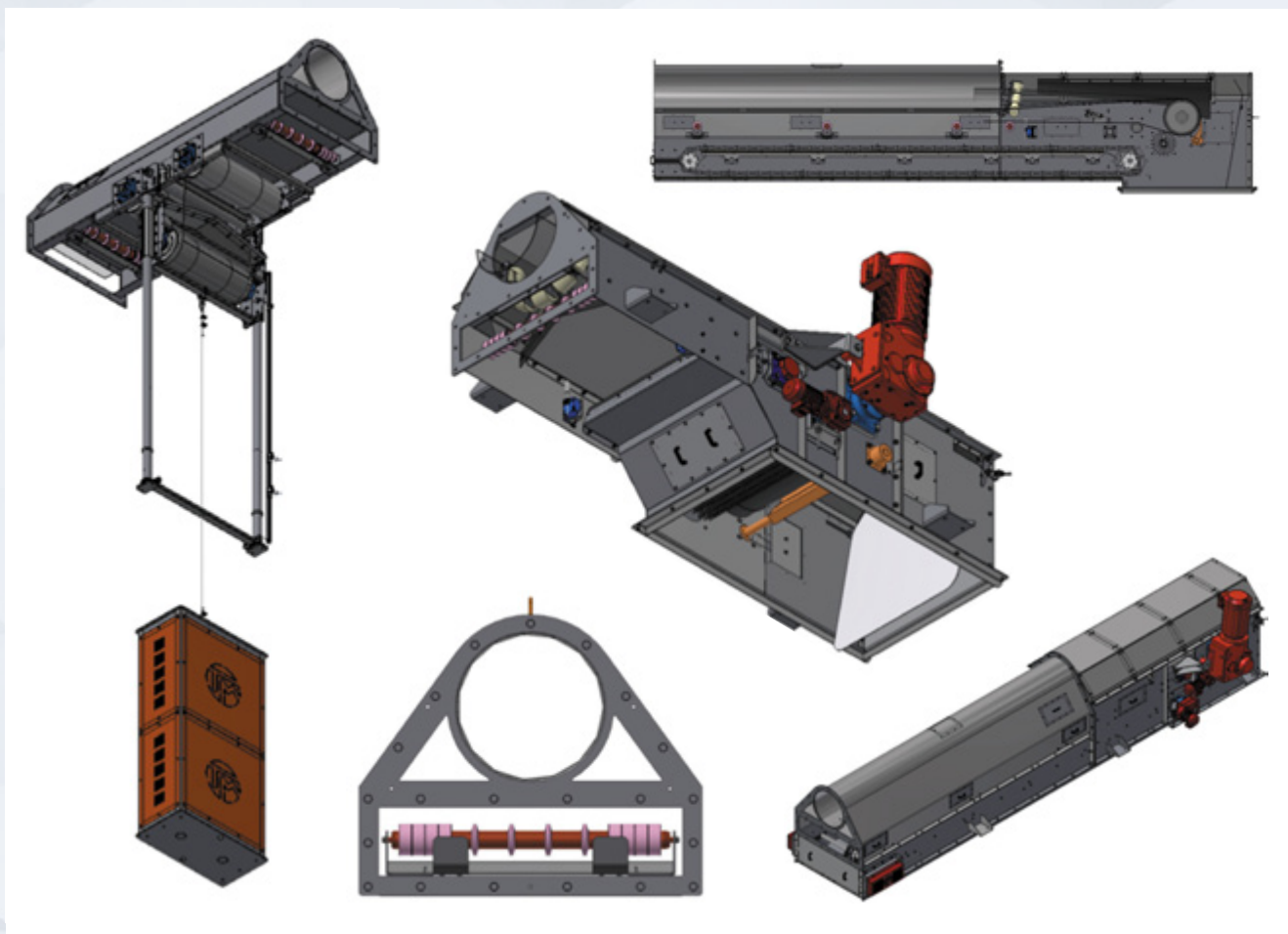
- Capacities up to **1000 cm/h**
- Composed by cases, **self-supporting up to 20 m**
- Availability to support **with cables by trellis for lengths from 20 to 50 m**, for free spaces under conveyor
- Total elimination of dirty thanks to complete **closed case**
- Elimination of roller on work way implicate reduction of maintenance
- **Ventilators** installed every 50 meters permit to reduce friction
- Equipped with **SEW** gear motors, **KH** series, directly coupled on the shaft with conical socket for easy maintenance
- Equipped with **weight tensioning** system for length  $L > 30$  m

Belt is available with following characteristics:

- **Hot vulcanized rubber belt with high stress resistance**
- Very **low temperatures resistant** ( $T < -40$  °C)
- **Self-Cleaning systems** as motorized brush, scraper
- As option, suitable with **"recovering" chain conveyor**, installed along the first 5 meters on the return way.







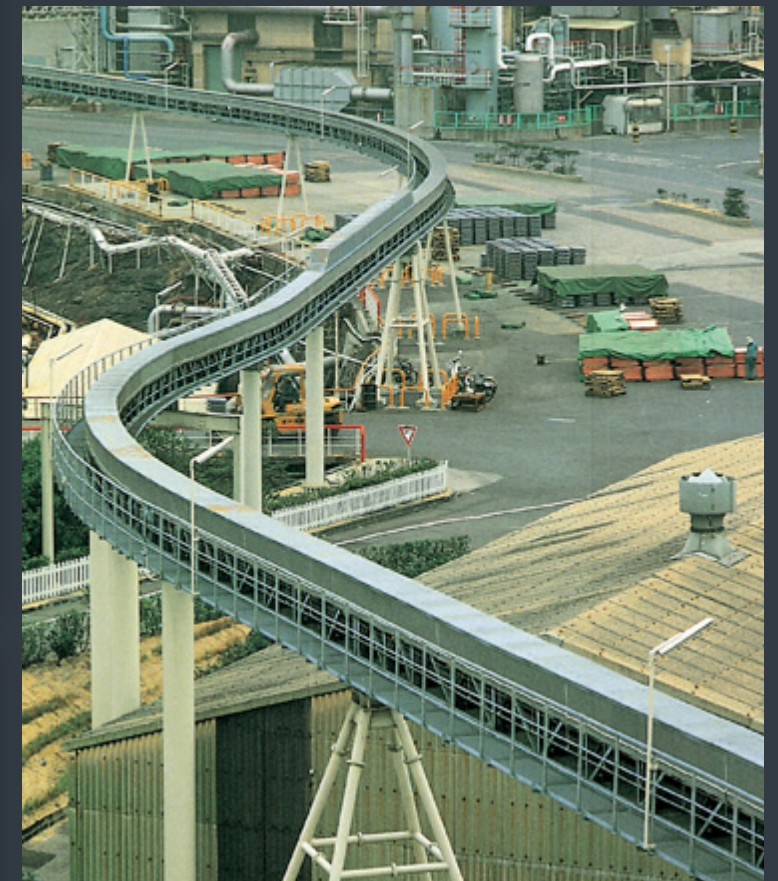




## 9 BELT CONVEYORS COBRA RANGE

### MAIN FEATURES

- suitable for greater length, they give the possibility to make wide radius curves and to allow to have product conveying sections by means of the only one conveyor
- The conveying speed up to 2,5 m/sec and greater filling degree assures bigger conveying capacity compared to that of a regular belt conveyor











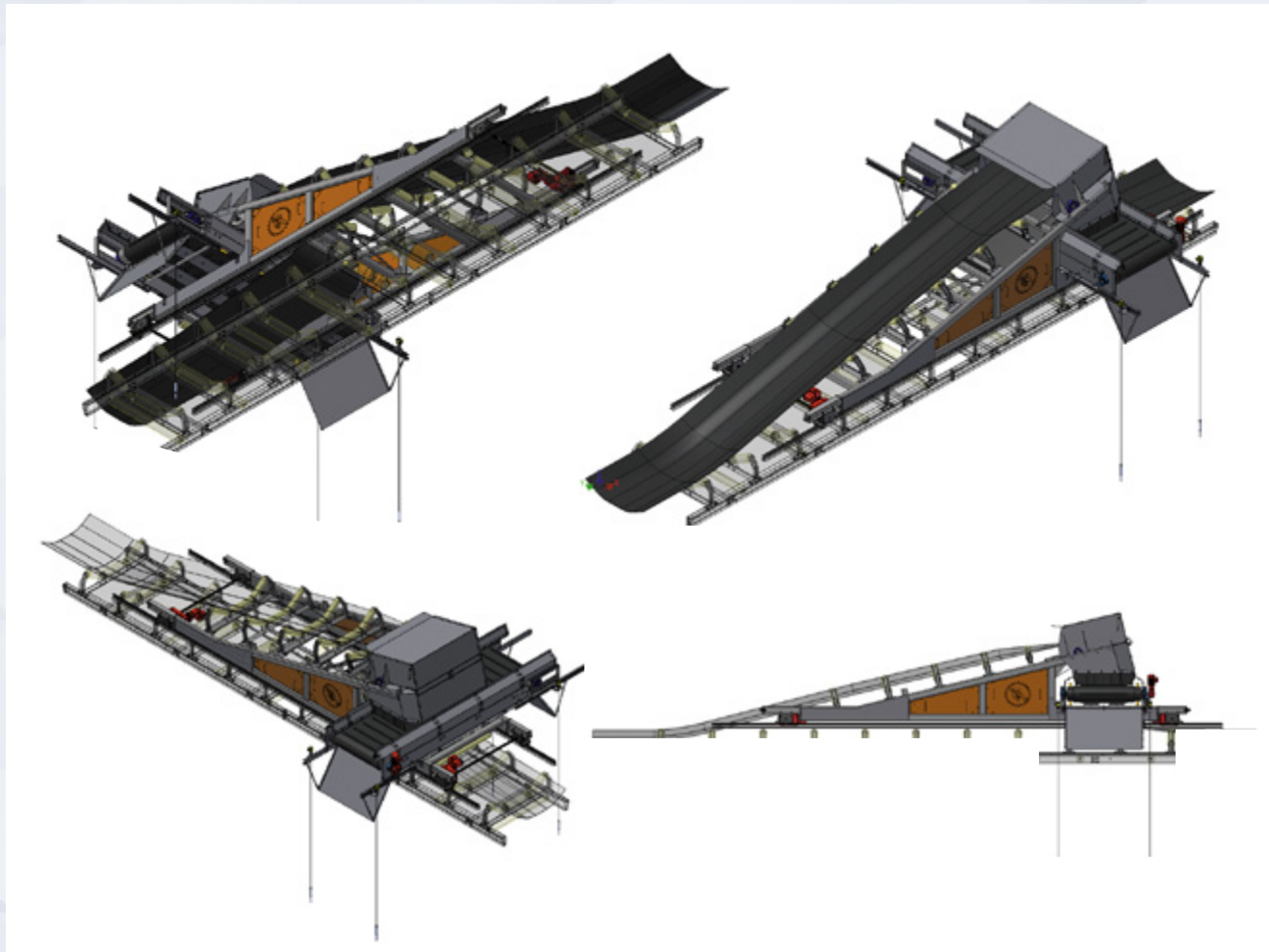
## 10 TRIPPER BELT CONVEYORS

### MAIN FEATURES

- Created for bulk products distribution in storage areas with automated extraction or static storage areas.
- The significant length of those systems allow to convey big volumes and capacities tank to the fact that they can be placed rather high.
- Width from **800 up to 1600** mm for capacities up to 100 m<sup>3</sup>/h











## 11 BUCKET ELEVATOR GB RANGE

### MAIN FEATURES

- Bucket elevators of GB range allow the vertical conveying of products, saving the ground space.
- Capacity from 100 up to 900 cm/h







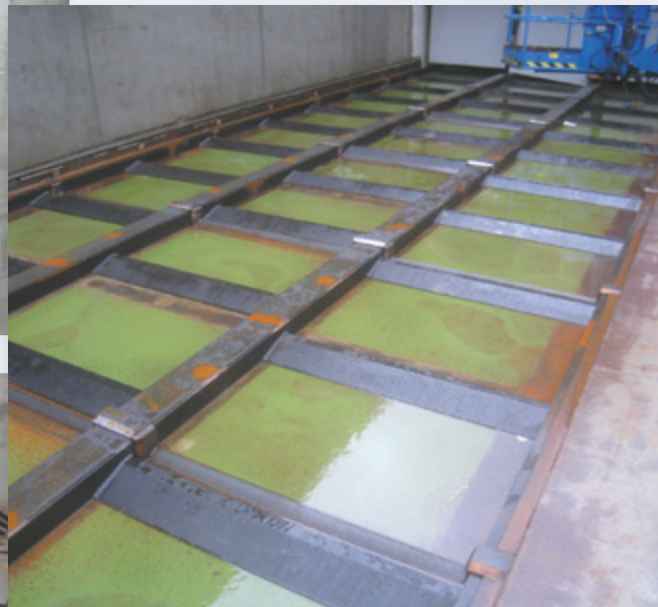




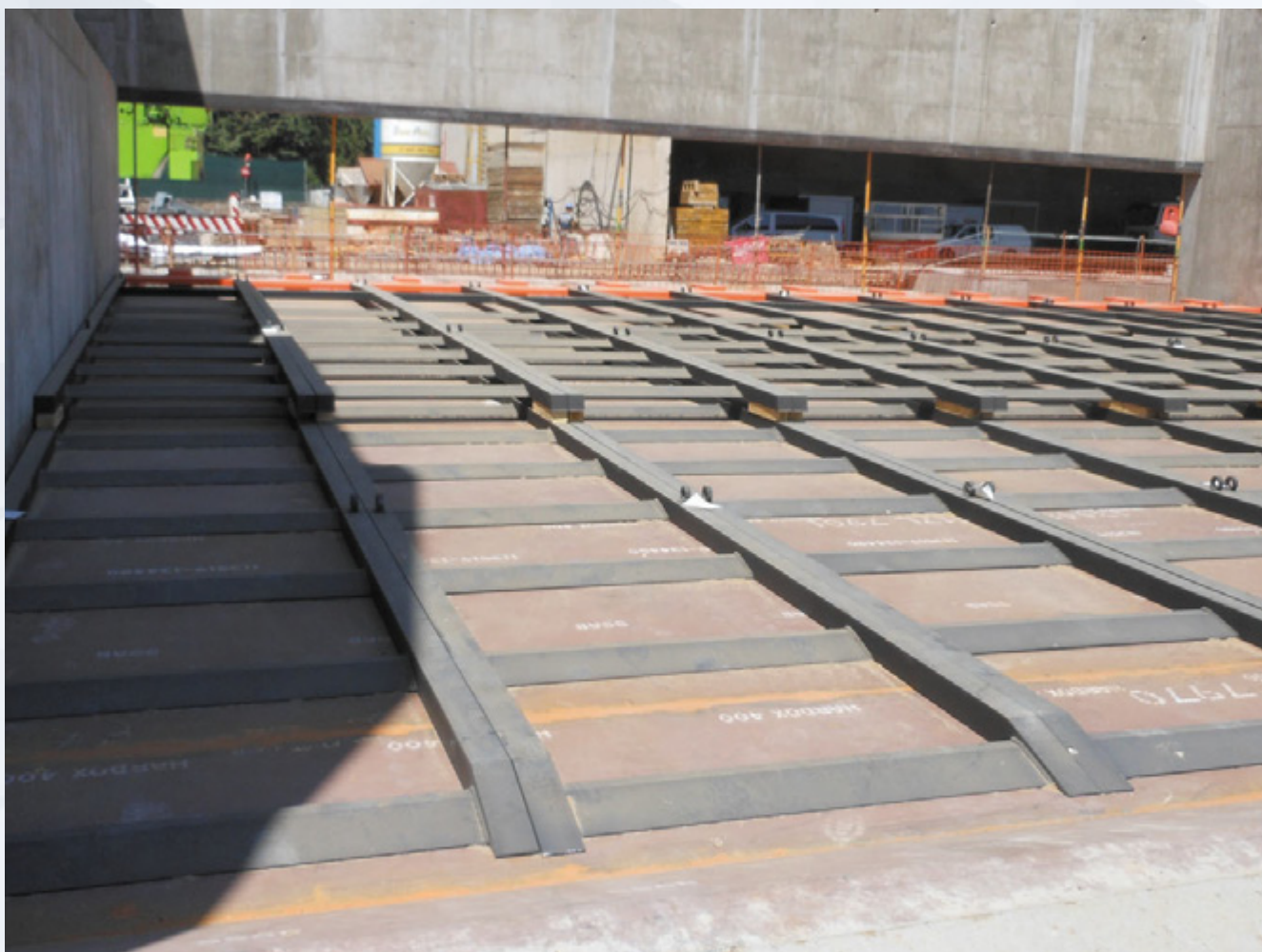
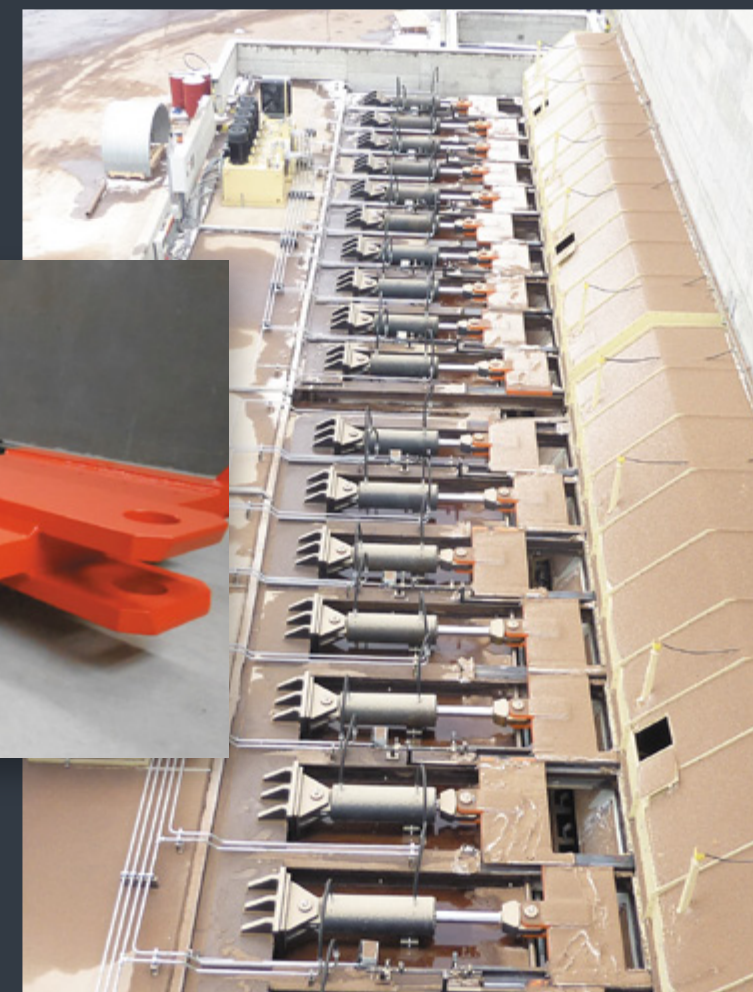
## 12 MOVING FLOORS STORAGE AND EXTRACTION SYSTEMS

### MAIN FEATURES

- The Extraction systems of Moving Floors type are perfect for automated extraction of stored products of medium/high volumes.
- Thanks to the possibility to be loaded by automatic systems or by bulldozer, make them especially flexible for different plants areas.







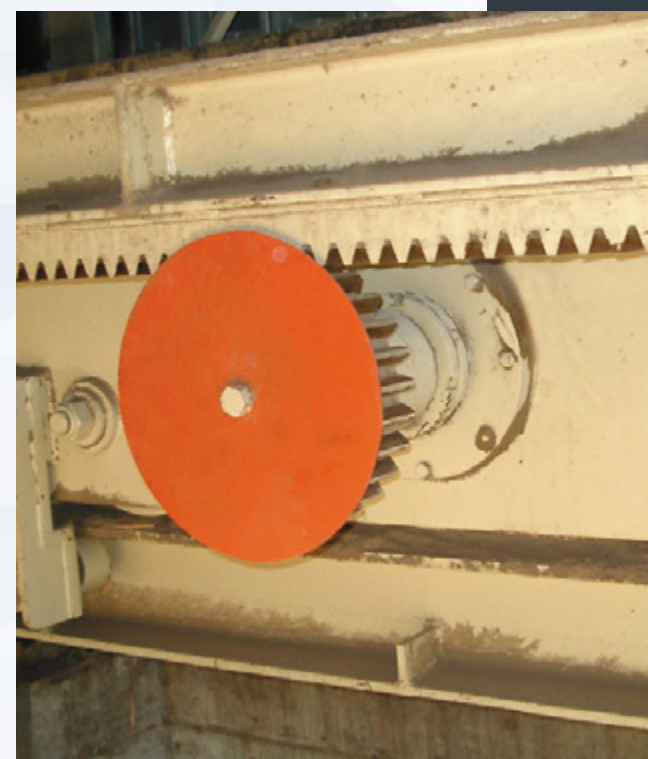




## 13 TRAVELLING SCREW STORAGE AND EXTRACTION SYSTEMS

### MAIN FEATURES

- The travelling screw conveyors extraction systems from silo permit to automate the product extraction for medium/height volumes.







## 14 STEEL PLATE CONVEYORS CRT – PST RANGE

### MAIN FEATURES

- Thanks to its sturdy construction, steel plates conveyors are excellent for logs and recycling wood reception and conveying and their further conveying to chipping lines.
- Steel plates conveyors allow very wide product dimensions range handling.



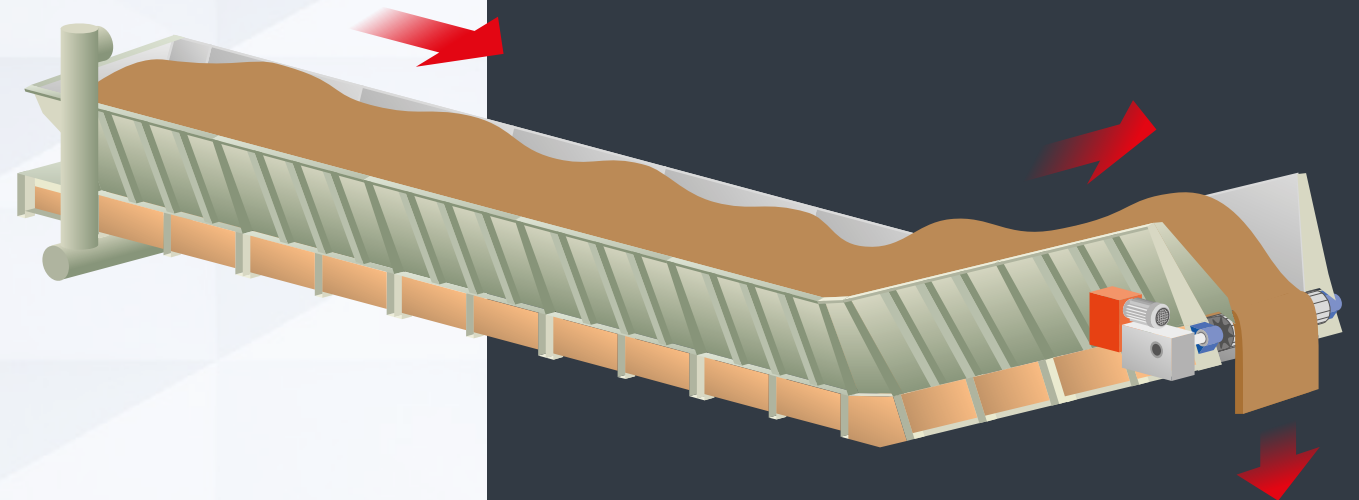
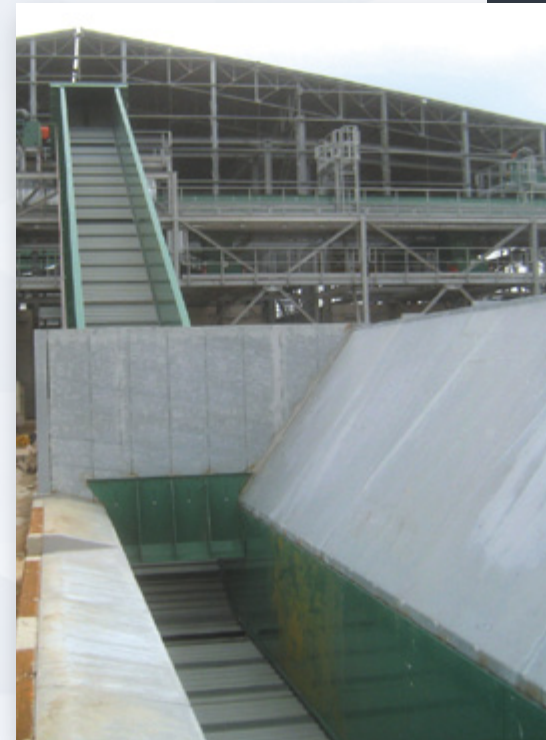




## 15 STEEL PLATE CONVEYORS CS RANGE

### MAIN FEATURES

- Steel plates conveyors of CS range are created to allow the reception of bulk product of small size to be conveyed to production process lines or to storage after the separation of over-size pieces.



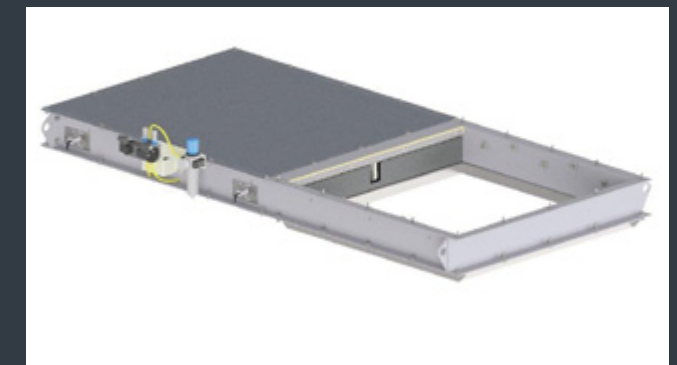
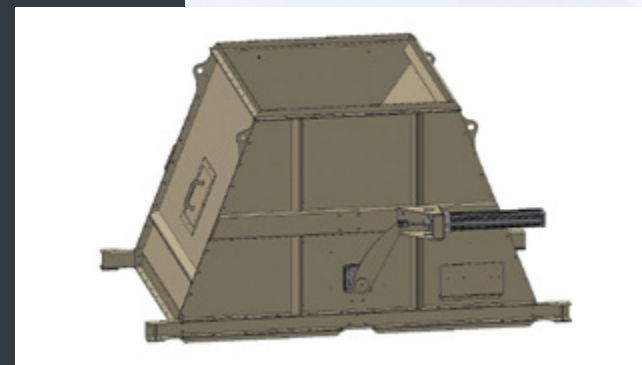
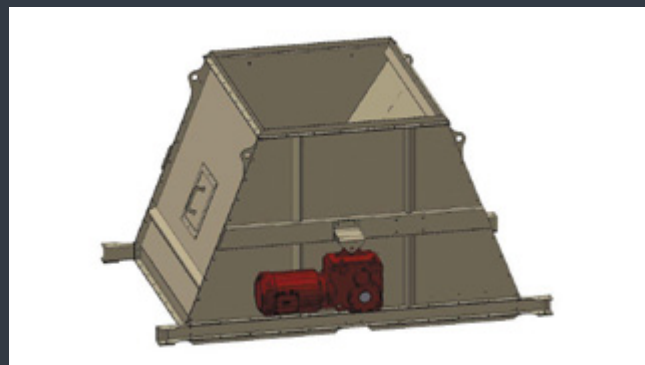




## 16 DIVERTERS – CLP RANGE

### MAIN FEATURES

- Our flaps are available in different sizes for every capacity, equipped with positioning sensors and by request with encoder.
- Gear-motor branded SEW.
- It is also possible to manufacture confirming **ATEX 21**.



## 17 MOTORIZED AND PNEUMATIC SLIDE SRD RANGE

### MAIN FEATURES

- Size of slides is adaptable for any conveyor of our production, available with gear motor (brand SEW) or pneumatic cylinder and equipped with positioning sensors.
- It is also possible to manufacture confirming **ATEX 21**.







## 18 DISK SEPARATORS SD, SD-PDN-SDL RANGE

### MAIN FEATURES

- Disks separators of SD, SD-PDN-SDL range are commonly used for elimination of oversize pieces from bulk products.
- Different configurations allow to these systems to be installed both directly on the process lines and on the reception or storage systems.











## 19 ROLLER SEPARATORS SR-TN RANGE

### MAIN FEATURES

- The system is appropriate for oversize pieces separation on biomass combustion chambers feeding lines.







Via Soncinese, 2/A - 26011 Casalbuttano (Cremona) Italy  
Tel. +39 0374 364011 - Telefax: +39 0374 364077  
<http://www.trasmec.com>  
e-mail thecnical department: [ufficiotecnico@trasmec.com](mailto:ufficiotecnico@trasmec.com)  
e-mail commercial department: [direzione@trasmec.com](mailto:direzione@trasmec.com)